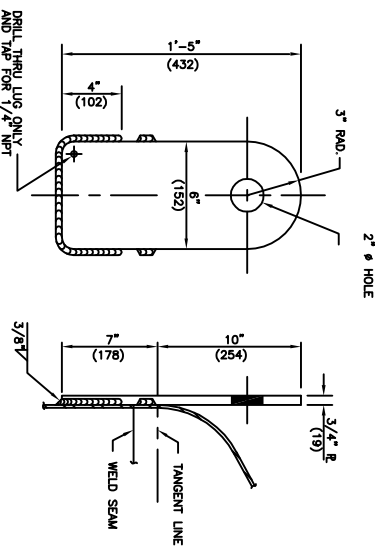
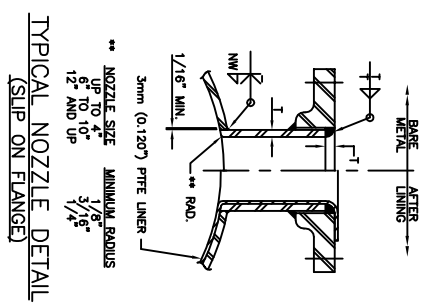


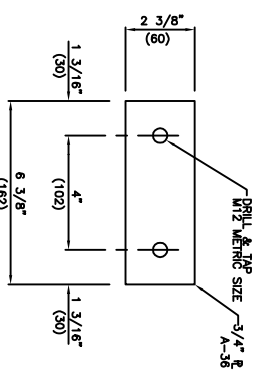
24" MANWAY DETAIL
 ONE (1) REQUIRED ● NOZZLE MARK (H)
 SEE FRONT SHEET FOR ORIENTATION



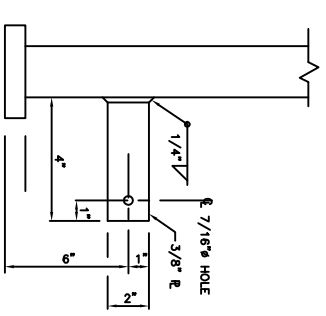
LIFTING LUG DETAIL
 SEE FRONT SHEET FOR ORIENTATION
 TWO (2) REQ'D. MAT'L. SA-36



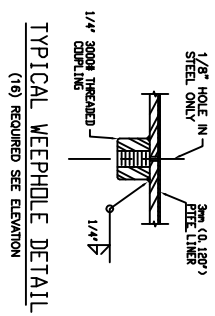
TYPICAL NOZZLE DETAIL
 (SLIP ON FLANGE)



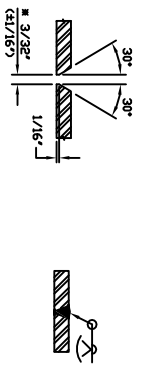
MOUNTING PAD DETAIL
 SEE FRONT SHEET FOR ORIENTATION
 TWO (2) REQUIRED



GROUNDING LUG DETAIL
 ONE (1) REQUIRED. SEE FRONT SHEET FOR ORIENTATION

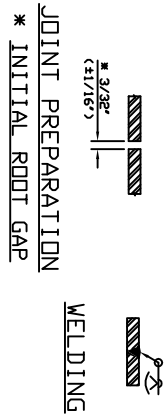


TYPICAL WEEPHOLE DETAIL
 (18) REQUIRED SEE ELEVATION



JOINT PREPARATION
 * INITIAL ROOT GAP

CIRCUMFERENTIAL SEAMS



JOINT PREPARATION
 * INITIAL ROOT GAP

LONGITUDINAL SEAM

CUSTOMER: N.S.C. / OLIN CUSTOMER DWG. No.: PID-66A PROJECT: OLIN / BELGIUM SERVICE: ME BLEND TANK		P.O. No.: N05217 ITEM No.: V6001 SITE: ZWINDRECHT, BELGIUM ONE (1) UNIT REQ'D.	
FABRICATED FOR: NISSHEIN GULF COAST HOUSTON, TEXAS.		FABRICATED BY: Pro Performance HOUSTON, TEXAS.	
REVISIONS REVISIONS REQUIRED PER CLIENT COMMENT FOR 03-36		SCALE NOT TO SCALE DRAWN ATX 1/2"=1' CHAD GAS 1/2"=1' APFD 1/2"=1'	
DRAWING No.: 121298D		SHEET No.: 2 of 3	
REVISION No.: 03-36		REVISION No.:	